



# **GROWTH<sup>®</sup>**

## **PREMIUM HAIR EXTENSIONS**

**FACTORYPRICING|BULKORDERDISCOUNTS|CUSTOMIZATION  
NEW DELHI, INDIA**

 [www.growthhair.in](http://www.growthhair.in) , [www.growthexports.in](http://www.growthexports.in)



**+91 99106 71779**



**sales@growthexports.com**

**MANUFACTURERS & DISTRIBUTORS**

# Growth Exports (ABOUT US IN BRIEF)

**“Growth Exports”** Established as a **Proprietor** firm in the year **2018**, we **“Growth Exports”** are a leading **Manufacturer** of a wide range of highly involved in Manufacturing and Exporting a wide assortment of **Indian Virgin Human Hair, Brazilian And Peruvian Hair, Curly Hair Extensions, Wavy Hair Extensions, Straight Hair Extensions** and many more. These hairs are highly known and demanded in the market for their outstanding texture, skin friendly, moist resistance, easy to clean, long lasting shine and affordable prices. Our offered hairs are prepared under the direction of our experts by making use of top notch quality raw input and advanced technology in tandem with industry set norms. Moreover, we have team of quality professionals who inspect these prepared hairs on different quality parameters. Our customers can avail these hairs from us in various lengths and colors as per their choices.

## **Our Infrastructure**

With the aid of our technologically advanced and innovative infrastructural unit, we are able to deliver the premium quality range of Human Hair to our prestigious customers. Equipped with contemporary machines, tools, and technology, this infrastructural unit facilitates us to accomplish the enormous necessities of the customers within the scheduled time span. These installed equipment and machines are timely checked for smooth working.

## **Quality Assurance**

We are quality centric organization and committed to complete the varied needs of our patrons in proficient way. All our hairs are accessible in custom-made options and within the prearranged time period. Our highly qualified professionals make these hairs using the quality approved raw material that is bought from reliable retailers of market. Our manufacturing unit is embedded with the superior technology and superior machinery.

# ONE STOP SHOP FOR ALL YOUR HAIR EXTENSION NEEDS



## **Machine Weft Hair Extensions**

Growth Exports MACHINE WEFT is one of the hair extension application types which are woven in to your natural hair. SEW IN process initially requires one's natural tresses to be braided around the head in concentric circles. Once these natural braids are sewn down, the WEFTS are sewn to the braids. Wefting is the process where the bulk hair is stitched together by securing the ends of root part of hair strands together through the specially designed sewing machines. See below for facts about machine wefts.





## Closures & Frontal

Growth Exports Closures & Frontals Hair Extensions are secured properly just behind the hairline. It can allow the wearer to wear a full weave with no hair left out while giving the appearance of a natural scalp area.





## WIGS

Growth Exports 100% Human Hair Wigs make you look and feel confident and beautiful! Our wigs provide full head coverage and are easy to use. Try our full head hair wigs for Ladies and embrace the confident feeling that comes with it.





100% Human Hair



## TAPE-IN HAIR EXTENSIONS

Growth Exports 100% Tape in Hair Extensions More and more popular among girls for its higher stability and less burden to the hair. It's very seamless and docile, you can't feel it when you touch it outside your hair with your hands. Tape in hair is hand sewed into a clean skin base and then attached to a durable double sided invisible adhesive tape.



### REAL HUMAN HAIR

- Silky and smooth
- Can be washed & permed



Our pre-pounded head can apply with different size micro ring, protect hair from damage of the outer hard metal extrusion.

### ITALIAN KERATIN GLUE

- Exquisite pre-Bonded head, can apply with different size micro beads
- Easy to operate
- Install firmly



Keratin Glue, Long Lasting, Tight, Neat, Shedding, Free

**CURATAIN I TIP**



## PERMANENT HAIR EXTENSION (I-TIPS, U-TIPS, V-TIPS, FLAT-TIPS. NANO-TIPS)

Growth Exports 100% Human silky salon professional itip human hair extensions, an invisible and soft extension that mirrors your natural hair. Made from superior remy human hair, our hair extensions undergo advanced processing, resulting in a tangle-free and shed-free product. Thick and healthy ends, provide a luxurious, natural feel, and ensure long-lasting durability.





## **CLIP ON / VOLUMIZER HAIR EXTENSIONS)**

Growth Exports 100% Human Clip On Extensions are made with the highest Grade 100% Indian Remy Hair. Our hair extensions naturally blend with your own hair and can be washed and/or styled any way just like your own hair. With the needed care, they will stay with you for 1-2 years. These provide thickness from top to bottom.

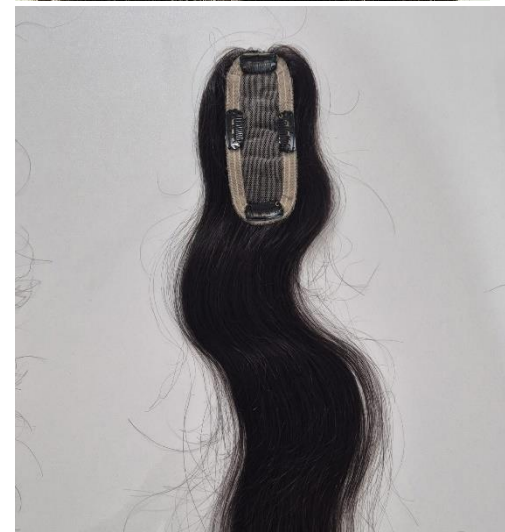




## **SEAMLESS CLIP ON / VOLUMIZER HAIR EXTENSIONS)**

Growth Exports 100% Human Clip On Seamless Hair Extensions are made with the highest Grade 100% Indian Remy Hair. Our hair extensions naturally blend with your own hair and can be washed and/or styled any way just like your own hair. With the needed care, they will stay with you for 1-2 years. These provide thickness from top to bottom.





## **LACE TOPPERS**

Our Lace Hair Topper is perfect product if you have hair thinning around front and crown area, as it covers entirely from front till your crown area. It gives you a faux scalp and it can be clipped on either side(left, middle and right partition), 1: The natural texture of hair topper is wavy, we straight the hair and then deliver. It is heat resistant and can be recolored. 2: Model is holding All Size lace hair topper





5\*8cm

8\*12cm

12\*14cm



12\*13cm

14\*15cm

16\*16cm

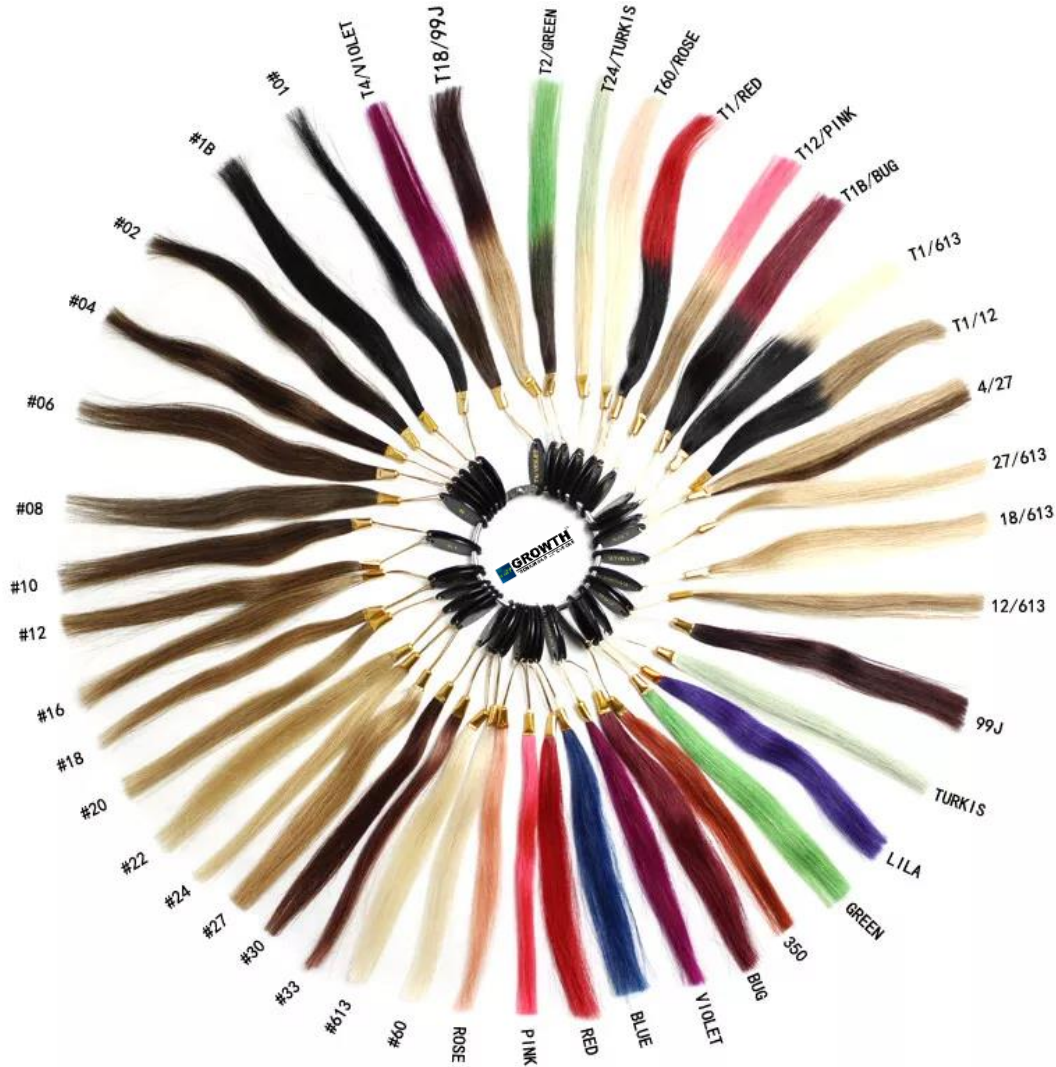


## SILK TOPPERS

Silk Hair Toppers are the best, instant, and finest hair-thinning solution. Our Silk Toppers are designed to make sure you can easily cover your thinning area and add volume to your hair with premium quality real human hair, *hand knotted* to recreate your scalp so seamlessly that no one will ever guess you have something to cover up your hair thinning.



# COLOR RING



## HAIR LENGTH CHART

LENGTH	
6 inch	15 cm
8 inch	20 cm
10 inch	25 cm
12 inch	30 cm
14 inch	35 cm
16 inch	40 cm
18 inch	45 cm
20 inch	50 cm
22 inch	55 cm
24 inch	60 cm
26 inch	65 cm
28 inch	70 cm
30 inch	75 cm
32 inch	80 cm



How to measure



CALL/ WHATSAAP:- +91 99106 71779